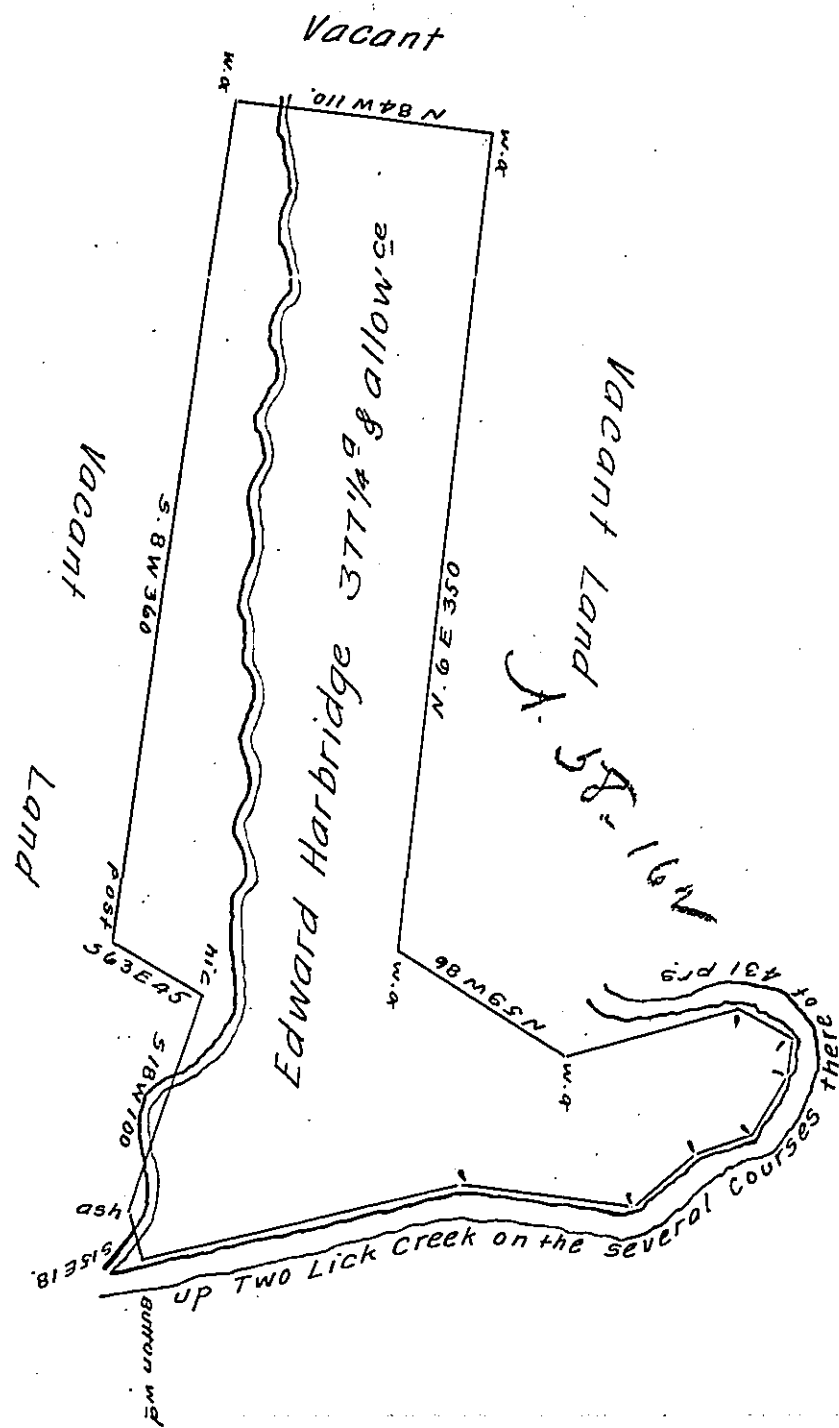


Courses & Distances up Creek.

N 77 E	135
S 85 E	83
N 51 E	34
N 73 E	26
N 29 E	30
N 14 E	16
N 64 W	28
S 75 W	79
<hr/>	
In all.	431 p ^{ts}



Survey'd on the 21st May 1770 for Edward Harbridge the above Described Tract. Containing Three hundred and Seventy seven acres and one Quarter of an acre and Allowance of Six $\frac{1}{2}$ Cent. Situate on the North Side of Black lick Creek. by Order of the 3^d day of April 1769. N^o 523.

Note. this Draft bro^t to ye Office 25th May 1790. Joshua Elder D.S. by Joshua Elder.

John Lukens Esq^r S. Gen^l

IN TESTIMONY that the above is a copy of the original remaining on file in the Department of Internal Affairs of Pennsylvania, made conformably to an Act of Assembly approved the 16th day of February, 1833, I have hereunto set my Hand and caused the Seal of said Department to be affixed at Harrisburg, this twenty first day of September 1910.

Henry Honck

Secretary of Internal Affairs.